



Yes, you can.®

Order Form
June 2019

INVACARE EU Export
Customer Service: +49(0) 57 31/7 54-5 40; Fax: +49(0) 57 31/7 54-5 41
www.invacare-eu-export.com

Invacare® Action³ NG CE

The product includes all standard features
Maximum User Weight: 125kg

Standard Base Price: **1260,00 €**

Company Stamp

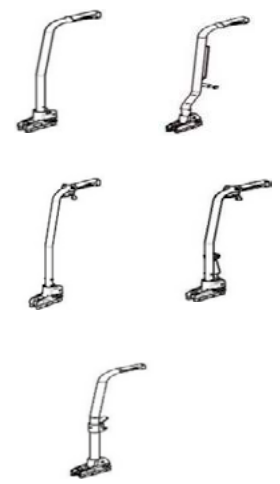
Reference

Please make your selection with a cross in the box ◆ Standard feature ○ Free of Charge (NC 9999) = not compatible with ref 9999

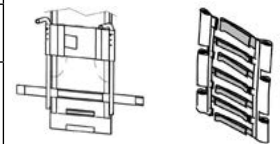
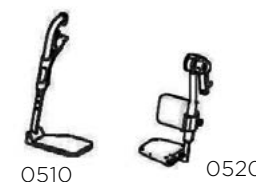
Code	Description	Nc	€
MODEL			
CEB0026	Base model action ³ ng		1.260,00
CEBSPEC	Special		On Request
PROPULSION TYPE			
CEB0100	Self propulsion	(NC: 1125)	◆
CEB0110	Transit propulsion with rh tipping aid only with 12" rear wheels (1125)	(NC: 0251, 0290, 0300, 0310, 0315, 0428, 0511, 0561, 0738, 0739, 1051, 1052, 1060, 1080, 1081, 1095, 1100, 1110, 1114, 1116, 1117, 1118, 1119, 1140, 1150, 1180, 1190, 1260, 1261, 1275, 1320, 1330, 1365, 1390)	153,00
CEB0140	Dual handrim right hand propulsion (new dhr system), qr axle	(NC: 0300, 0310, 0315, 0511, 0561, 0738, 0739, 1051, 1081, 1095, 1100, 1110, 1114, 1116, 1117, 1118, 1119, 1125, 1140, 1150, 1170, 1260, 1261, 1280, 1330, 1365)	537,00
CEB0150	Dual handrim left hand propulsion (new dhr system), qr axle	(NC: 0300, 0310, 0315, 0511, 0561, 0738, 0739, 1051, 1081, 1095, 1100, 1110, 1114, 1116, 1117, 1118, 1119, 1125, 1140, 1150, 1170, 1260, 1261, 1280, 1320, 1365)	537,00
CEB0160	Oad by lever rh propulsion	(NC: 0251, 0290, 0300, 0310, 0315, 0511, 0561, 0640, 0650, 0738, 0739, 1051, 1052, 1081, 1095, 1100, 1110, 1114, 1116, 1117, 1118, 1119; 1125, 1140, 1150, 1180, 1190, 1201, 1260, 1261, 1280, 1320, 1330, 1365, 1390)	730,00
CEB0170	Oad by lever lh propulsion	(NC: 0251, 0290, 0300, 0310, 0315, 0511, 0561, 0640, 0650, 0738, 0739, 0740, 0750, 1051, 1052, 1081, 1095, 1100, 1110, 1114, 1116, 1117, 1118, 1119, 1125, 1140, 1150, 1180, 1190, 1201, 1260, 1261, 1280, 1320, 1330, 1365, 1390)	730,00
SEAT			
SEAT WIDTH			
CEB0180	380 mm seat width	(NC: 0251, 0442)	○
CEB0190	405 mm seat width	(NC: 0251)	○
CEB0200	430 mm seat width		○
CEB0210	455 mm seat width		○
CEB0220	480 mm seat width	(NC: 0442)	○



CEB0230		505 mm seat width		○	
SEAT DEPTH					
CEB0240		400 mm seat depth	(NC: 0879, 0883)	○	
CEB0250		450 mm seat depth	(NC: 0878, 0883)	○	
CEB0251		500 mm seat depth (with active rear wheel support only)	(NC : 0330, 0350, 0869, 0871, 0878, 0879, 0908, 1201, 1365)	○	
CEB0252		400 To 450 mm adjustable seat depth set at 430 mm	(NC: 0330, 0350, 0883)	◆	
SEAT HEIGHT					
CEB0260		510 mm seat height	(NC: 0511, 0561, 0738, 0739, 1049, 1050, 1051, 1052, 1100, 1110, 1117)	◆	
CEB0270		485 mm seat height	(NC: 0511, 0561, 1051)	○	
CEB0280		460 mm seat height		○	
CEB0290		435 mm seat height	(NC: 1000, 1010, 1020, 1030; 1125)	○	
CEB0300		410 mm seat height	(NC: 0935, 1000, 1010, 1020, 1030, 1052, 1125, 1365, 1370, 1440, 1441)	○	
CEB0310		385 mm seat height !! Only available with 5" front wheels (1051) & 20" or 22" rear wheels !!	(NC: 0511, 0561, 0660, 0670, 0738, 0739, 0760, 0770, 0838, 0839, 0935, 1280, 1365, 1370, 1440, 1441)	○	
CEB0315		360 mm seat height 0° seat angle !! Only available with low fork, 5" front wheel (1051) & 20" rear wheels (1116) !!	(NC: 0511, 0561, 0600, 0611, 0620, 0660, 0670, 0738, 0739, 0760, 0770, 0838, 0839, 0935, 1280, 1365, 1375, 1440, 1441)	○	
SEAT UPHOLSTERY TYPE					
CEB0330		Nylon without velcro strips seat upholstery		○	
CEB0340		Nylon with velcro strips seat upholstery		◆	
CEB0350		Padded nylon seat upholstery			29,00
BACKREST					
BACKREST TYPE Anti-tippers required with reclining backrests (0430, 0435, 0440, 0442, 0445, 0450)					
CEB0380		Fixed 0° backrest 2 heights 400/430 mm (deliv. 430 mm), fixed push handles	(NC: 0945)	○	
CEB0390		Fixed 0° backrest 510 mm height, fixed push handles	(NC: 0945)		49,00
CEB0395		Fixed 7° backrest height adjust 380 to 460 mm (delivered 380 mm) fixed push handles (follow upholstery height) !! Only with contour backrest upholstery (0480) !!	(NC: 0461, 0462, 0463, 0464, 0905, 0906, 0907, 0908, 0940, 1451)		169,00
CEB0396		Fixed 7° backrest height adjust 380 to 460 mm (delivered 380 mm) fixed push handles (follow upholstery height) height adjustable push handles (independantly from upholstery height) !! Only with contour backrest upholstery (0480) !!	(NC: 0461, 0462, 0463, 0464, 0905, 0906, 0907, 0908, 0940, 1451)		239,00
CEB0410		Fixed 7° backrest 2 heights 400/430 mm (deliv. 430 mm), fixed push handles	(NC: 0945)	◆	
CEB0420		Fixed 7° backrest 510 mm height, fixed push handles	(NC: 0945)		49,00
CEB0425		Fixed 7° backrest 430 mm height; height adjustable pushhandle (150 mm)	(NC: 0945)		119,00
CEB0428		Fixed 7° backrest active 350 mm height (adjustable to 400 mm), fixed push handles (short)	(NC: 0480, 0481, 0905, 0906, 0907, 0940, 1280, 1451)		169,00
CEB0435		Reclining (ratchet) 0/30° backrest 3 heights 390/410/430 mm (deliv. 430 mm)	(NC: 0738, 0739, 0940, 0945, 1190)		338,00
CEB0440		Reclining (ratchet) 0/30° backrest 3 heights 470/490/510 mm (deliv. 510 mm)	(NC: 0738, 0739, 0940, 0945, 1190)		338,00



CEB0442	Reclining (gas spring) 0/30° laguna shell 510mm height !! Only with comfort backrest laguna (0490) !!	(NC : 0882, 0738, 0739, 0908, 0940, 0945, 1190, 1345, 1451)	520,00	
CEB0445	Reclining (gas spring) 0/30° backrest 3 heights 390/410/430 mm (deliv. 430 mm)	(NC: 0738, 0739, 0940, 0945, 1190)	459,00	
CEB0450	Reclining (gas spring) 0/30° backrest 3 heights 470/490/510 mm (deliv. 510 mm)	(NC: 0738, 0739, 0940, 0945, 1190)	459,00	
CEB0455	Folding 7° backrest 2 heights 400/430 mm (deliv. 430 mm), fixed push handles	(NC: 0945)	170,00	
CEB0460	Folding 7° backrest 2 heights 480/510 mm (deliv. 510 mm), fixed push handles	(NC: 0480, 0481, 0945)	170,00	
MATRIX BACK (LOSS OF APPROX 20 MM SEAT DEPTH WITH RECLINING GAS SPRING BACKREST)				
CEB0461	Matrx elite back with hardware 405 mm back height (additional delivery time + 5 working days)	(NC: 0474, 0475, 0478, 0479, 0480, 0481, 0882, 0940, 0945)	676,00	
CEB0462	Matrx elite back with hardware 455 mm back height (additional delivery time + 5 working days)	(NC: 0474, 0475, 0478, 0479, 0480, 0481, 0882, 0940)	676,00	
CEB0463	Matrx elite deep back with hardware 405 mm back height (additional delivery time + 5 working days)	(NC: 0474, 0475, 0478, 0479, 0480, 0481, 0882, 0940)	828,00	
CEB0464	Matrx elite deep back with hardware 455 mm back height (additional delivery time + 5 working days)	(NC: 0474, 0475, 0478, 0479, 0480, 0481, 0882, 0940)	828,00	
BACKREST UPHOLSTERY TYPE				
CEB0474	Lumbar support (+1 strap) bi material padded cover incl. Back pocket			○
CEB0475	Lumbar support (+1 strap), padded shaped cover			◆
CEB0478	Contour adjustable (3+1 straps) bi material padded cover incl. Back pocket, including backbrace	(NC: 0940, 0945)	113,00	
CEB0479	Contour adjustable (3+1 straps) padded, shaped cover, including backbrace	(NC: 0940, 0945)	89,00	
CEB0480	Contour adjustable (7+1 straps) padded, shaped cover, including backbrace	(NC: 0940, 0945)	149,00	
CEB0481	Contour adjustable (7+1 straps) bi material padded cover incl. Back pocket, including backbrace	(NC: 0940, 0945)	168,00	
CEB0490	Comfort backrest laguna dartex 510 mm height	NC: 0738, 0739, 0940, 0945, 1451)	204,00	
HANGERS/FOOTPLATES				
HANGERS RH TYPE				
CEB0510	80° Straight rh swing in/swing out hanger			◆
CEB0511	90° Straight rh swing in/swing out hanger black colour only !! Only with 5" front wheels (1051) !!	(NC: 0600, 0936)		○
CEB0520	Elevating legrest (0° to 75°) rh swing in/ swing out hanger (including calfpad)	(NC: 0611, 0930, 0935, 0936)	110,00	
CEB0545	Amputee legrest rh	(NC: 0600, 0610, 0611, 0930, 0936)	150,00	
HANGERS LH TYPE				
CEB0560	80° Straight lh swing in/swing out hanger			◆
CEB0561	90° Straight lh swing in/swing out hanger black colour only !! Only with 5" front wheels (1051) !!	(NC: 0620, 0936)		○
CEB0570	Elevating legrest (0° to 75°) lh swing in/ swing out hanger (including calfpad)	(NC : 0611, 0930, 0935, 0936)	110,00	
CEB0595	Amputee legrest lh	(NC: 0611, 0620, 0630, 0930, 0936)	150,00	
FOOTPLATES RH TYPE				
CEB0600	Flip up rh footplate (including heel strap)			◆
CEB0610	Flip up depth & angle ajustable rh footplate (including heel strap)		59,00	
CEB0611	Flip up one piece footplate depth & angle adjustable	(NC: 0620, 0630, 0935, 0936)	189,00	
FOOTPLATES LH TYPE				

0474/0475/
0479/04780480/
0481

0510

0520



0545

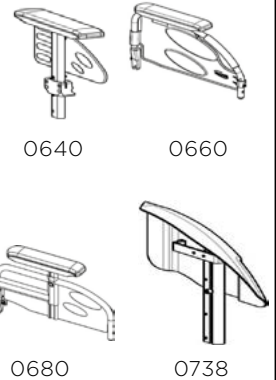


0610



0611

CEB0620		Flip up lh footplate (including heel strap)		◆
CEB0630		Flip up depth & angle ajustable lh footplate (including heel strap)		59,00
ARMRESTS				
ARMRESTS RH FORM IN BLACK COLOUR				
CEB0640		Removable rh (n°1) autolock safety device included desk adj. 200 To 280 mm height	(NC: 0760, 0770, 0780, 0790, 0838, 0839, 1480)	○
CEB0650		Removable rh (n°1) autolock safety device included full length adj. 200 To 280 mm height	(NC: 0760, 0770, 0780, 0790, 0838, 0839)	○
CEB0660		Swing away detachable rh (n°2) desk 240 mm height	(NC: 0740, 0750, 0780, 0790, 0838, 0839, 1480)	○
CEB0670		Swing away detachable rh (n°2) full length 240 mm height	(NC: 0740, 0750, 0780, 0790, 0838, 0839)	◆
CEB0680		Swing away detachable rh (n°3) desk adj. In height	(NC: 0740, 0750, 0760, 0770, 0838, 0839, 1480)	49,00
CEB0690		Swing away detachable rh (n°3) full length adj. In height & depth	(NC: 0740, 0750, 0760, 0770, 0838, 0839)	49,00
CEB0738		"Removable mudguard rh (n°6) height adjustable (155 to 220 mm) (cushion is recommended for seat height 410 & 435 mm)"	(NC: 0740, 0750, 0760, 0770, 0780, 0790, 0839, 1100, 1110, 1200, 1201, 1480)	59,00
CEB0739		Tubular armrest rh, swing away padded tube with removable mudguard rh (n°6) (cushion is recommended for seat height 410 & 435 mm)	(NC : 0740, 0750, 0760, 0770, 0780, 0790, 0838, 1051, 1100, 1110, 1116, 1117, 1200, 1201, 1345, 1365, 1430, 1480)	68,00
ARMRESTS LH FORM IN BLACK COLOUR				
CEB0740		Removable lh (n°1) autolock safety device included desk adj. 200 To 280 mm height	(NC: 1480)	○
CEB0750		Removable lh (n°1) autolock safety device included full length adj. 200 To 280 mm height		○
CEB0760		Swing away detachable lh (n°2) desk 240 mm height	(NC: 1480)	○
CEB0770		Swing away detachable lh (n°2) full length 240 mm height		◆
CEB0780		Swing away detachable lh (n°3) desk adj. In height	(NC: 1480)	49,00
CEB0790		Swing away detachable lh (n°3) full length adj. In height & depth		49,00
CEB0838		Removable mudguard lh (n°6) height adjustable (155 to 220 mm) (cushion is recommended for seat height 410 & 435 mm)	(NC: 1100, 1110, 1116, 1117, 1200, 1201)	59,00
CEB0839		Tubular armrest lh, swing away padded tube with removable mudguard lh (n°6) (cushion is recommended for seat height 410 & 435 mm)	(NC: 1100, 1110, 1200, 1201, 1116, 1117, 1345, 1365, 1430, 1480)	68,00
SEATING OPTIONS TYPE				
SEAT CUSHION TYPE				
CEB0849		Basic 50 mm foam cushion		45,00
CEB0869		Matrx flo-tech lite cushion	(NC: 0883)	136,00
CEB0871		Matrx flo-tech contour visco cushion	(NC: 0883)	260,00
CEB0876		Matrx libra cushion (additional delivery time + 5 working days)		540,00
SEAT CUSHION DEPTH				
CEB0878		For 400 mm seat depth		○
CEB0879		For 450 mm seat depth		○
CEB0883		For 500 mm seat depth		○
OTHER SEATING OPTIONS				
CEB0882		Lateral positioning pads (pair)		159,00
CEB0905		Neckrest dartex (including backbrace except for laguna)	(NC: 0906, 0907, 0908, 0940, 0945)	79,00
CEB0906		Headrest dartex (including backbrace except for laguna), sidewise adjustable	(NC: 0907, 0908, 0940, 0945)	249,00



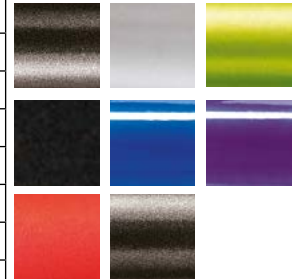
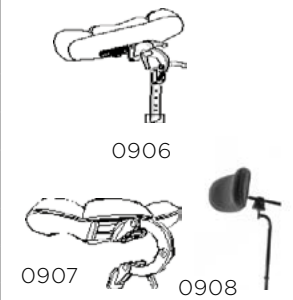
0680

0738



0905

CEB0907		Headrest with cheek support darterx (including backbrace except for laguna), sidwise adjustable	(NC: 0908, 0940, 0945)	295,00
CEB0908		Matrx soft pad headrest (soft pad 250mm) with fixed hardware	"! ONLY FOR MATRX BACK ! (NC: 0940, 0945)"	375,00
CEB0930		Adjustable calf strap		19,00
CEB0935		Longer footrest tube (ul= 450-530 mm)	(NC: 0936)	24,00
CEB0936		Shorter footrest support (pair) (ul= 230-430 mm)		69,00
CEB0940		Backbrace	(NC: 0945)	59,00
CEB0945		Foldable backbrace	(NC: 1451)	165,00
COLOURS				
CEB0961		Slate grey (ral7024 fine texture)		◆
CEB0964		Pearl white		○
CEB0965		Electric green		○
CEB0966		Matt black		○
CEB0967		Blue pop		○
CEB0968		Hypnotic purple		○
CEB0969		Red matt		○
CEB0980		Anthracite black		○
CASTOR HOUSING TYPE				
CEB0995		Standard		◆
CEB0996		Light weight		15,00
FRONT WHEELS				
CEB1000		200 X 32 mm (8" x 1.1/4") Pneumatic tyre		○
CEB1010		200 X 32 mm (8" x 1.1/4") Black solid tyre		○
CEB1020		200 X 50 mm (8" x 2") pneumatic tyre		○
CEB1030		200 X 50 mm (8" x 2") black solid tyre		◆
CEB1049		150 X 32 mm (6" x 1.1/4") Solid tyre medium hard		○
CEB1050		150 X 32 mm (6" x 1.1/4") Black solid tyre		○
CEB1051		125 X 25 mm (5" x 1") solid tyre	(NC: 1125)	○
CEB1052		140 X 45 mm (5" 1/2 x 1" 3/4) solid tyre medium hard	(NC: 1125)	○
REAR WHEELS				
REAR WHEEL TYPE				
CEB1060		610 X 35 mm (24" x 1.3/8") Pneumatic tyre spoked rim	(NC: 1261)	○
CEB1080		600 X 35 mm (24" x 1.3/8") Solid tyre spoked rim	(NC: 1261)	◆
CEB1081		600 X 35 mm (24" x 1.3/8") Black solid tyre spoked rim	(NC: 1261)	○
CEB1095		595 X 25 mm (24" x 1") notched pneumatic tyre spoked rim	(NC: 1261, 1280)	65,00
CEB1100		560 X 35 mm (22" x 1.3/8") Pneumatic tyre spoked rim	(NC: 1260)	60,00
CEB1110		555 X 35 mm (22" x 1.3/8") Solid tyre spoked rim	(NC: 1260)	○
CEB1116		515 X 35 mm (20" x 1.3/8") Solid tyre spoked rim	"(NC: 1170, 1260, 1280) ! ONLY WITH SEAT HEIGHT 360 MM !"	125,00
CEB1117		560 X 25 mm (22" x 1") lightweight pneumatic tyre radial spoked	(NC: 1170, 1201, 1230, 1260, 1261, 1280)	195,00
CEB1118		595 X 25 mm (24" x 1") lightweight pneumatic tyre radial spoked	(NC: 1170, 1201, 1230, 1260, 1261, 1280)	195,00
CEB1119		595 X 25 mm (24" x 1") lightweight marathon plus pneumatic tyre radial spoked	(NC: 1170, 1201, 1230, 1260, 1261, 1280)	195,00
CEB1114		595 X 25 mm (24" x 1. 3/8") Lightweight black solid tyre radial spoked	(NC: 1170, 1201, 1260, 1261, 1280)	173,00



1000



1020

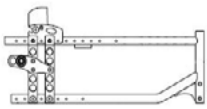


1050

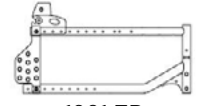


1060 / 1080

CEB1125		305 X 45 mm (12" x 2") black solid tyre plastic rim incl. In transit version	(NC : 1140, 1150, 1180, 1190, 1260, 1261, 1320, 1330, 1380, 1390)	○
HANDRIM TYPE				
CEB1140		Aluminium pre-anodized handrim		◆
CEB1150		Handrim coated in black anti-slip plastic		79,00
REAR WHEELS AXLE TYPE				
CEB1170		Fixed axle	(NC: 1365)	○
CEB1180		Quick release axle		◆
REAR WHEELS POSITION				
CEB1190		Standard rear wheels position (25 mm frontward / backrest cane axle; 12,5 mm with active rear wheel support and seat depth 500 mm)		◆
CEB1200		Passive rear wheels position (25 mm backward / backrest cane axle; 12,5 mm with active rear wheel support and seat depth 500 mm)		○
CEB1201		Dual amputee rear wheels positions (transit=75mm backward/backrest cane axle, adjustable to 50 mm by the dealer self prop=60 mm backward/backrest cane axle, adjustable to 85 mm by the dealer)	(NC: 1275, 1280, 1320, 1330, 1365)	75,00
PUMP				
CEB1230		Pump and support		10,00
CHASSIS OPTIONS TYPE				
CEB1241		Front wheels extension (+ 50 mm outward)		25,00
CEB1260		Spoke guards pair 600 mm (24") black		117,00
CEB1261		Spoke guards pair 560 & 515 mm (22" & 20") clear		117,00
BRAKES TYPE				
CEB1270		Push to lock brakes		◆
CEB1275		Pull to lock brakes		○
CEB1280		Attendant hub brakes (including push to lock brakes)		209,00
CEB1320		Oad wire controled brake rh	(NC: 1390)	81,00
CEB1330		Oad wire controled brake lh	(NC: 1390)	81,00
SAFETY OPTIONS TYPE				
CEB1345		Transportation kit including posture belt	(NC: 1360)	74,00
CEB1360		Posture belt		59,00
CEB1365		Transfer kit (100 mm (4") wheels) anti-barrier		90,00
CEB1370		Rear anti-tippers pair	(NC: 1375, 1440, 1441)	79,00
CEB1375		Rear anti-tippers pair with tipping aid (rea type)	(NC: 1440, 1441)	99,00
CEB1380		Reflectors kit		◆
CEB1390		Brake extension pair		26,00
ATTENDANT OPTIONS TYPE				
CEB1430		Cane holder		19,00
CEB1440		Rh tipping aid		19,00
CEB1441		Lh tipping aid		19,00
CEB1451		Drip stand support with dripstand (with backbrace 0940 only)		109,00
ACCESSORIES TYPE				
CEB1480		Acrylic tray		268,00
TOTAL PRICE				



1201 SP



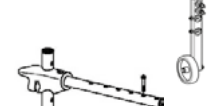
1201 TR



1345



1370



1375

